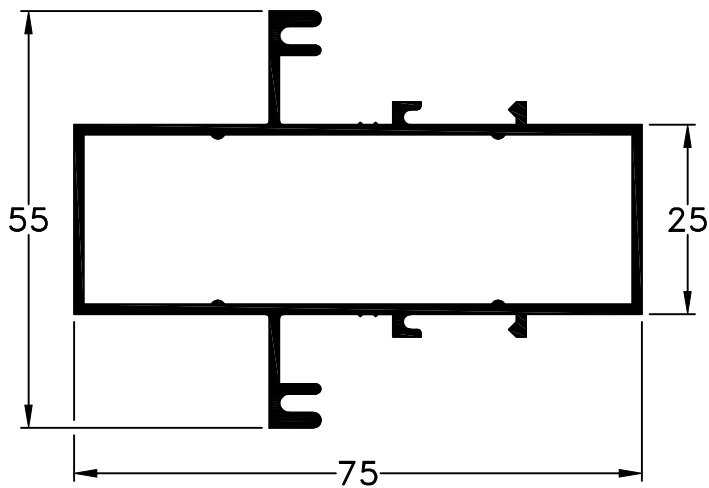
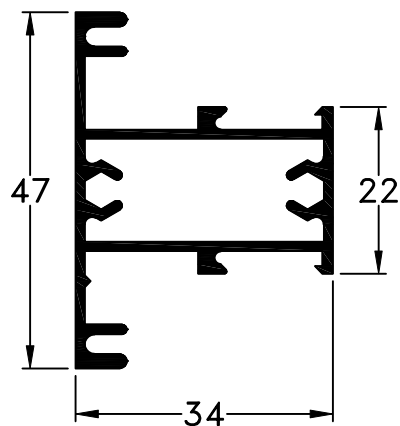


907 - Marco de
Paño Fijo
peso: 0,59 Kg/m



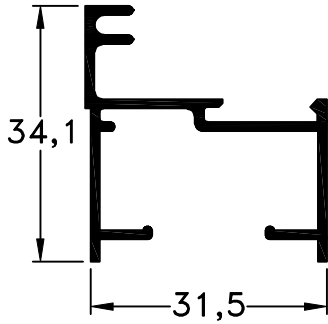
994 - Travesaño de 75 mm
peso: 0,96 Kg/m



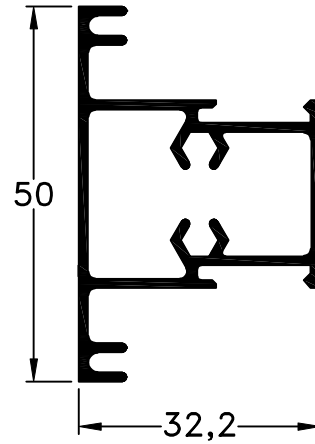
993 - Travesaño de 34 mm
peso: 0,67 Kg/m

Escala 1:1
Tolerancia en Peso +/- 10%

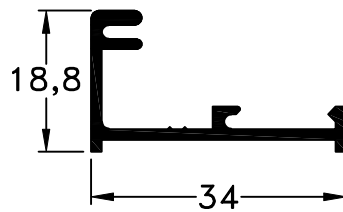
02-02-18 **TRADICIONAL.20**



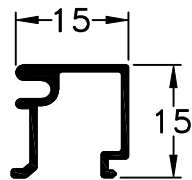
673 - Marco
peso: 0,39 Kg/m



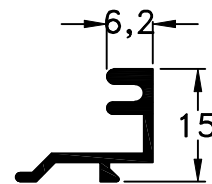
674 - Travesaño
peso: 0,63 Kg/m



952 - Porta Contravidrio
peso: 0,28 Kg/m



908 - Contravidrio
peso: 0,16 Kg/m



909 - Contravidrio
peso: 0,16 Kg/m