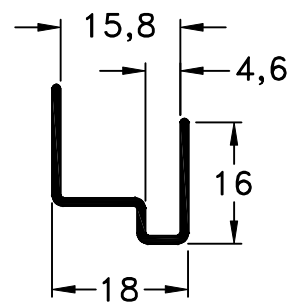
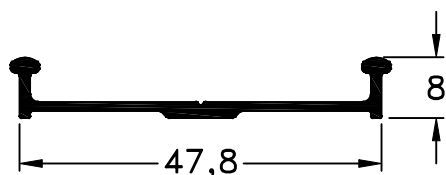


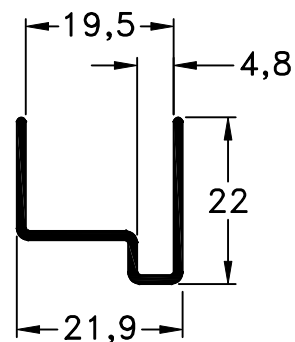
160 - Guía Superior
peso: 0,68 Kg/m



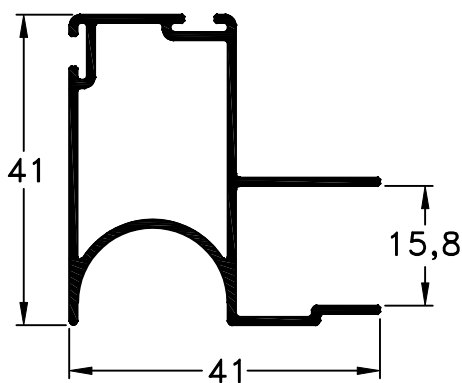
156 - Cantonera p/15mm
peso: 0,16 Kg/m



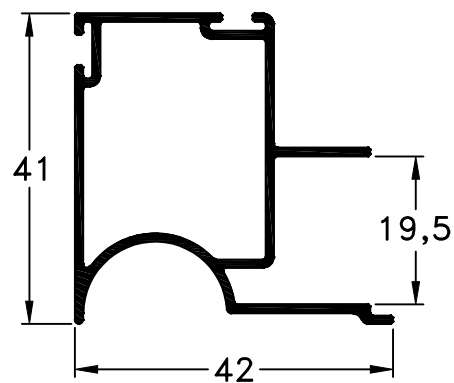
157 - Guía Inferior
peso: 0,25 Kg/m



158 - Cantonera p/18 mm
peso: 0,20 Kg/m



155 - Parante p/15 mm
Largo Std.: 5200 mm
Peso: 0,53 Kg/m



159 - Parante p/18mm
Largo Std.: 5200 mm
Peso: 0,54 Kg/m

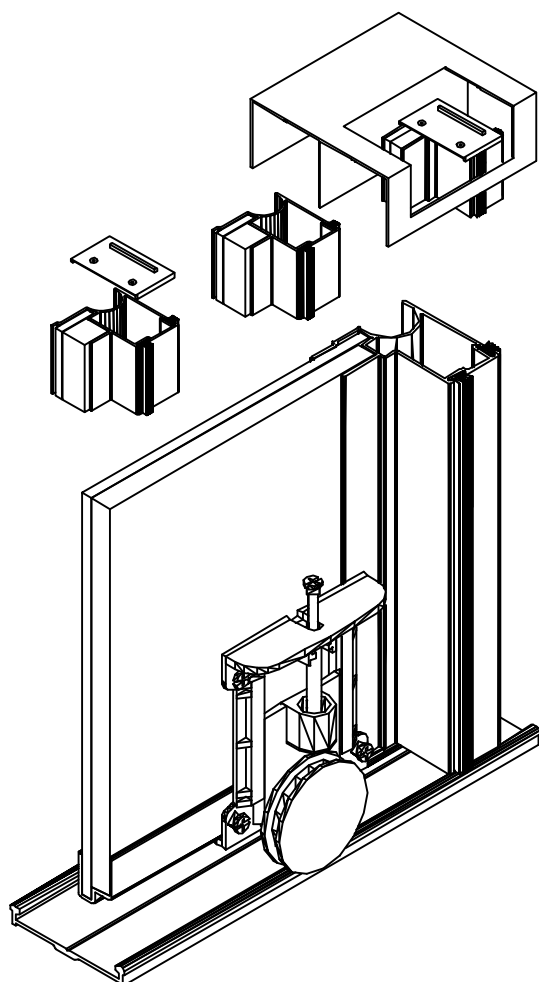
Escala 1:1

Tolerancia en Peso +/- 10%

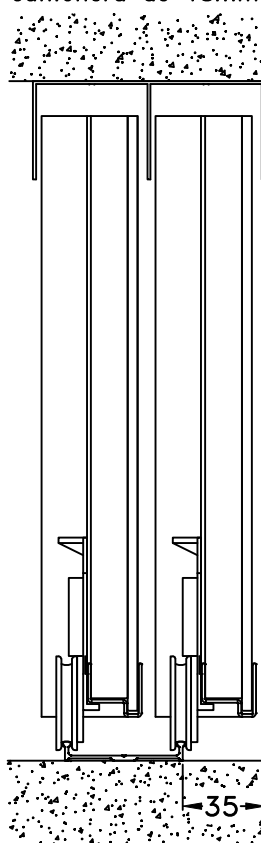
08-04-16 **SISTEMAS COMPLEMENTARIOS.6**

| Dimensiones de Corte | | | | | | |
|----------------------|-----------|-------|----------------|-------|--------|---------|
| Código | Peso Kg/m | Forma | Función | Cant. | Largo | Corte |
| 160 | 0,68 | | Guía Superior | 1 | A | 90° 90° |
| 157 | 0,25 | | Guía Inferior | 1 | A | 90° 90° |
| 156 | 0,16 | | Cantonera 15mm | 2 | A/2-66 | 90° 90° |
| 155 | 0,53 | | Parante 15mm | 4 | H-32 | 90° 90° |
| 158 | 0,20 | | Cantonera 18mm | 2 | A/2-57 | 90° 90° |
| 159 | 0,54 | | Parante 18mm | 4 | H-32 | 90° 90° |

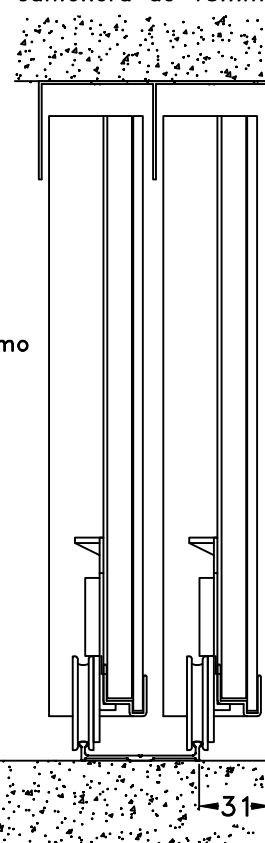
* Medidas en milímetros



Detalle Vertical cantonera de 18mm.



Detalle Vertical cantonera de 15mm.



Nota: Posicionamiento de guía inferior a partir de un plomo exterior de guía superior. Dimensión teórica a verificar in situ.

| Accesorios Placard de 2 Hojas | | | | |
|-------------------------------|--------|---------------------------------|-------|----------|
| Ítem | Código | Descripción | Forma | Cantidad |
| Kit | 8729 | Kit de Placard para Parante 155 | | 1 Kit |
| Kit | 8730 | Kit de Placard para Parante 159 | | 1 Kit |
| Felpa | 8243 | Felpa de Polipropileno 7x4,5 | | 5H |

s/m: según medida.

Tolerancia en Peso +/- 10%

08-04-16 **SISTEMAS COMPLEMENTARIOS.23**